

# FamilyConnection

South Carolina



2010 Annual Report

FamilyConnection  
South Carolina

*Improving the lives of children with special health care needs in South Carolina*

# Happy 20th Anniversary Family Connection

For 20 years, the state of South Carolina has had a place – a welcoming and special place – that offers emotional support, information and resources to families caring for a child with disabilities or special healthcare needs. The founding parents knew that tapping into the knowledge, experience and expertise of parents “who have been there” was the vital element to the success of this organization. Today, there are over 600 volunteer Support Parents who give that support to other parents. Family Connection, as the South Carolina Family-to-Family Health Information Center (HRSA funded) and as South Carolina Family Voices, can facilitate a national search of supportive parents who can be matched to the family of a child who has a rare diagnosis or complicated situation. Join us as we reflect on 20 years of service and dedication to families and celebrate all that this organization is today!



## Vision

All children with special needs will reach their full potential.

## Mission

The mission of Family Connection of South Carolina is to strengthen families of children with special needs through parent support.

## 2009-2010 Board of Directors

### President

\*Heyward Brabham  
Brabham Fence Company

### Vice President

Dr. Warren Derrick  
Department of Pediatrics,  
USC School of Medicine

### Secretary

\*Randy Liggitt  
Scott and Stringfellow

### Treasurer

\* Todd Wrenn  
Merrill Lynch

### Past President

\*Dr. Laura Bird Long  
Blue Choice Health Plan

### \*Esther Dennis

A. Elliott Holman, III  
Palmetto Insurance

### \*Dr. Kyllan Hutchinson

David Lewis

Carolina Medical Equipment

Tom Moran

Greenville Hospital System

\*Annette Patterson  
Mead Johnson

\*Sharon Williams

Executive Director  
Jackie Richards, LMSW

*\*denotes the parent or relative of an individual with special needs*

*The Front Cover photograph of the children is courtesy of Dr. Donald Wuori.*



*“What does a connection to another parent really mean? When I was scared, someone was there with me who knew my fear intimately ... when I was angry, I met someone who understood my anger ... the anger eventually turned into tremendous pain, sorrow and grief, I felt safe with my friend because she too had experienced the grief, and she was okay with my tears. When I thought that I could never be a parent of a child with special needs, I learned that I had more strength, patience and determination than I thought I ever had because another parent believed in me and helped show me the way. I now know the joy and gift a child with special needs brings to my life and have made many friends who have walked in my shoes.” - from 2005 Annual Report.*



# From the President

To all of our Donors, Grantors, Volunteers, Partners and Friends, Twenty years of support and care for South Carolina families with children with special healthcare needs or disabilities is something to celebrate! It is because of people like you that this organization continues to thrive and grow. Looking back over the past 20 years, this organization has evolved into something I imagine the founding parents could have never imagined. In its beginning, there were 120 referrals to Family Connection of SC. This past year there were 2749 referrals (parents and professionals seeking information) and a total of 1627 parent-to-parent matches were made. There are now more than 40 support groups (called Parent Connections) across the state. Family Connection parent leaders are now members of medical teams supporting in the neonatal intensive care units, pediatric clinics and hospitals. What started out as a few parents providing support to other parents is now a network of over 600 volunteer parents. Each of these parents has been trained to support and give of their time, knowledge and care. Twenty years ago, we mailed everything, and now we can reach thousands of families with a keystroke on the computer.



A budget of under \$100,000 has grown to \$1.3 million. State agencies such as Department of Health and Human Services, Department of Disabilities and Special Needs, Department of Health and Environmental Control, and Department of Education recognize the value of partnering with families in this state to improve the quality of life for children with special healthcare needs. Family Connection has a strong base of funding from community partners such as hospitals and businesses and people who personally commit to supporting this organization. We thank you for these partnerships and the care you give to our families and children.

I have been honored to serve as the President of the Board of Directors and look forward to serving this next year as well. Please keep Family Connection at the top of your charitable giving and share the importance of our mission with families that could benefit from our programs.

Sincerely,

A handwritten signature in blue ink that reads "Heyward C. Brabham".

Heyward Brabham  
2010 President, Board of Directors

## 1990 - 1991 • 'Twenty Years'

Family Connection of South Carolina • 2010 Annual Report • Page 3

### From the 1991 Annual Report

In April, 1990, the Family Connection of South Carolina, Inc. began operation as an independent, community-based support network founded by families for families that have children of all ages with special needs. In little more than a year, that vision has matured into a respected, active, family-centered organization through the generous support, dedication, and cooperation of parents, staff, professionals, volunteers, and contributors from across the community. This report is a tribute to you, and a testimonial to the many people who have been touched by your efforts.

Marilyn V. Senneway  
Chairman, Board of Directors

### Referrals and Information

By the time Family Connection was funded in April 1990, volunteers had already received and responded to 29 referrals. During the first year in operation (1990-91), Family Connection volunteers and staff received and responded to 120 referrals. New referrals for 1991-92 are projected to exceed 200.

In addition, 10-15 families requested general information from Family Connection each month.

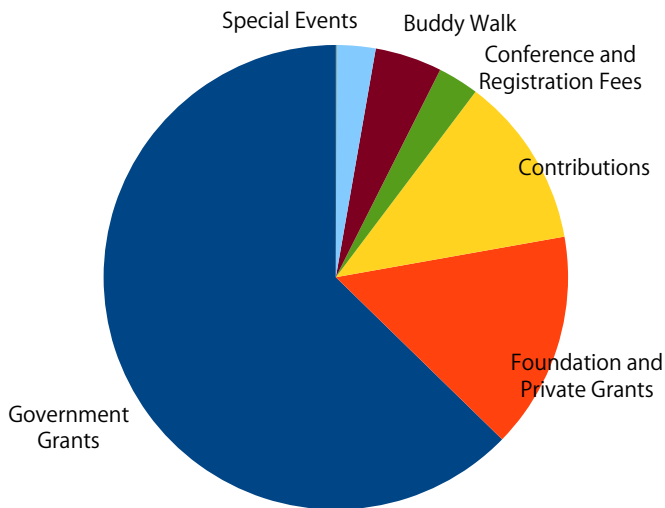
*My Family Connection support parent has helped me through the toughest year of my life. She has given me emotional support, hope and encouragement. She called me before and after every doctor's appointment and became my best advocate and friend. Family Connection provided the silver lining to my cloud.*



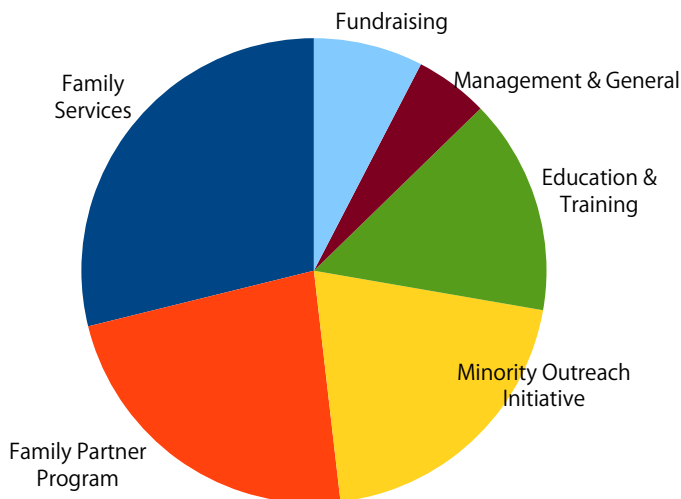
Family Connection of South Carolina, Inc.  
a support network for families that have children with special needs  
**ANNUAL REPORT**  
1990-91

# Financial Overview

## Revenue



## Expenses



## July 2009 - June 2010

### Public Support and Revenue

Government Grants	\$852,198
Foundation and Private Grants	205,184
Contributions	162,025
Conference and registration fees	38,816
Buddy Walk	63,317
Special Events	36,917
Other	547
<b>Total Revenue</b>	<b>\$1,359,058</b>

### Expenses

Program Services	
Family Services	\$368,988
Family Partner Program	293,792
Minority Outreach Initiative	261,458
Education and Training	192,010
Management and General	65,243
Fundraising	97,336
<b>Total Expenses</b>	<b>\$1,278,827</b>

Increase in unrestricted net assets	\$80,231
Changes in Endowment Fund	\$771
Increase in net assets	\$81,002
Net Assets, Beginning of Year	(\$18,440)
Net Assets, End of Year	\$62,562

**87%** of total expenditures are given directly to programs.



### Highlights:

Marilyn Senneway served as Board Chair. Connie Ginsberg was appointed as the first Executive Director.

Family Connection moved into the 'new' offices at 2712 Middleburg Drive, Columbia. Family Connection received more than 300 referrals, and Support Parents and support friends were matched to over 70 referred parents.

Fifteen parents completed the 12-hour Support Parent training.

Kid Connection, created for siblings 8-12, conducted two six-week sessions in the fall and spring in collaboration with the Center for Developmental Disabilities of the University of South Carolina.

Grandparents met for a workshop in May, which led to a series of regular meetings.

Family Service Center helped start the group.

The Holiday Social and June Picnic brought families together to celebrate the seasons and recognize volunteers.

The Family Partner Program was initiated. South Carolina Department of Health and Environmental Control-BabyNet contracted with Family Connection to develop a statewide program of parent-to-parent support to families that have children under age three who have developmental delays, disabilities or severe health problems.

Family Connection coordinated presentations by parents to physicians and medical students for awareness and education regarding family-centered care.

Income for the year totaled \$97,023, while expenses totaled \$77,200.

# From the Executive Director

Dear families and friends,

I wish I had a crystal ball to see what the next twenty years look like for Family Connection. We know that technology will play a big part in our ability to reach families and provide the support they need. We are reaching more and more families through Facebook, eConnection (our electronic newsletter), our website, and email. While the world demands electronic communication, something I hope we never lose is the value of the human connection. Nothing is better than a parent meeting a parent in person where they realize that they are not alone and that someone else truly cares about their child and their family. I remember the day that a mother who had a little baby in her arms searched through a crowd at one of our events to find the mother who supported her when she was pregnant with a baby with Down syndrome. They had talked hours over the phone, and that was meaningful, but that face-to-face was irreplaceable.



In the coming years, this organization needs to expand its “family”. There is a great need for support for families who have adult children who require parental/custodial care. The support systems and social opportunities for these families and adult children dwindle as they age out of school. We have incredible programs where we are able to sustain offices, but we must think of ways to reach counties where there are no offices and create parent-to-parent programs. We need to care for those who live in poverty and who are also faced with the challenge of caring for a child with special needs. We also need to speak the language of those who are in our country so that they too can find the care and support they need for their child. As you can see, our family is growing.

This is South Carolina’s place for families with children with special healthcare needs so it needs to be welcoming to all. Let’s continue to celebrate the lives of all children, make them and their families valued members of our communities, and secure the best possible life for them.

Thanks so much for your support of this very worthwhile and incredible organization.

Sincerely,

A handwritten signature in blue ink that reads "Jackie Richards". The signature is fluid and cursive.

Jackie Richards, LMSW  
Executive Director and parent

## 1993 • ‘Twenty Years’

### Highlights:

Claude Barden served as Board Chair.

Family Connection received more than 388 referrals, and Support Parents and support friends were matched to over 140 referred parents.

Nearly 60 parents completed the 12-hour Support Parent training.

Kid Connection, created for siblings 8-12, conducted a six-week session in the winter in collaboration with the Center for Developmental Disabilities of the University of South Carolina.

Grandparents met for three support group meetings, and hosted a Wills and Trusts Forum.

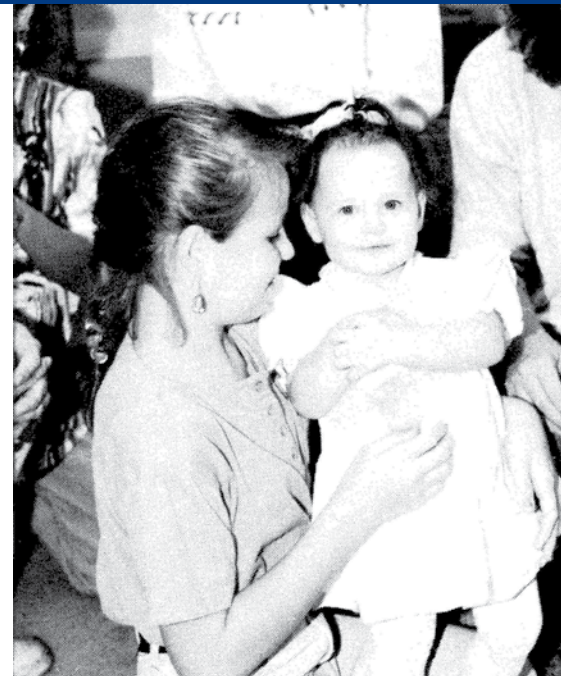
The Holiday Social and June Picnic in the Park(ing Lot) brought 300 family members together to celebrate the seasons.

The Family Partner Program, supported by South Carolina Department of Health and Environmental Control-BabyNet, provided support for over 300 families around the state.

Physician’s Education and Awareness Program, (PEAP) was initiated with funding from the Developmental Disabilities Council. Third-year medical students visit in the home of a family to gain a new perspective on the actual care needs of the child and how they impact the family.

The newsletter was distributed to over 1,500 families, professionals and donors.

Income for the year totaled \$242,805, while expenses totaled \$229,063.



# 20 Years of Impacting Lives in South Carolina



Katie & Becky Brown, Frieda & Steve Ritter - Columbia Annual Benefit & Auction

Katie was born 3 months premature with Spina Bifida. Today she is enrolled as a junior in Coker College in Hartsville, SC, with a desire to complete her Masters in Counseling and become an elementary school counselor.

Along the journey of caring for a child with special healthcare needs, parents experience a world they have never known. They learn medical terminology and diagnostic criteria. They learn how to care for gastrostomy tubes and tracheostomies. They have coped with exhilarating highs and devastating lows. Within their journey, these same families graciously open their arms and hearts to encircle other families struggling with a similar path. To share their experience. To ease anxiety. To simply understand.

Those are the families of Family Connection.

Founded in 1989 by a concerned group of parents and professionals, Family Connection is a community-based, family-focused organization providing support and assurance to families and family members living with disability, developmental delays and chronic illnesses.

Laura Hancock, Marilyn Senneway and Katie Burgess provided leadership for the founding of this parent-to-parent network where



Columbia SpecialKidz

*"My son loved Kid Connection. It helped him to learn to better ask questions and share concerns about his sister. The interaction with the other [siblings] helped him realize he is not alone. this was very helpful." - from 2002*



Columbia Asthma Event

*"My Family Connection support parent has helped me through the toughest year of my life. She has given me emotional support, hope and encouragement... Family Connection provided the silver lining in my cloud." - from 2003 Annual Report.*



Charleston Disability Awareness Walk



## Highlights:

Terry F. Kennedy served as Board Chair.

Family Connection received more than 375 referrals, and Support Parents and support friends were matched to over 125 referred parents.

Nearly 40 parents completed the 12-hour Support Parent training.

Extended Outreach in Columbia Housing Authority homes was funded by the Nord Family Foundation. This resulted in 30 new families over two months. Collaboration initiated with Richland School District One and The Nurturing Center helped develop new programs for parents who have children with special needs.

The Holiday Social and June Picnic in the Park(ing Lot), and other social events, brought 500 family members together.

The Family Partner Program provided support for over 300 families around the state with over 6,500 hours of parent-to-parent support.

*The Link*, Family Connection's newsletter, was distributed to over 2,000 families, professionals and donors.

Local hospitals asked Family Connection to provide support to new parents prior to taking their babies home. Family Connection staff/volunteers visited critically ill infants in the NICU when parents lived too far away to visit each day.

Community Awareness is always important. Parents and staff took the message to civic groups, the State House and the State Fall Fair.

Income for the year totaled \$285,936, while expenses totaled \$270,065.

# 20 Years of Impacting Lives in South Carolina

parents could find the support to best care for their children and families, and to meet their special needs. Claude Barden and Gina Taylor were other parents supportive of the cause, as were Dr. Deborah Valentine, Dr. Ronald Abbott, and Kay Richardson.

Under the leadership of Connie Ginsberg from 1991 to 2006, Family Connection grew into a statewide leader. The 'Highlights' from the Annual Reports of previous years tell of the growth and programs since its inception.

Today, under the leadership of Jackie Richards, Family Connection continues to offer support and encouragement to parents across the state in the face of an uncertain economy.

Since its founding more than 20 years ago, Family Connection has helped match more than 30,000 families. The network has linked parents and families to support, understanding and lasting friendships all while connecting those with disabilities to a future full of hope and strength in spite of their challenges.



*Bryann Burgess, daughter of Family Connection co-founder Katie Burgess, was born with Down syndrome. She is a junior at USC's Carolina Life non-degree program studying music and theater. She wants to become a teacher and is getting experience as an assistant teacher at Kindermusik.*

*"Being able to talk to other parents helped in deciding everything from medications, treatment and intervention strategies to which places are the most handicapped friendly. Parents are always willing to help others work through the system to get the best services for our own children." - K. Doudoukjian from 2006 Annual Report.*



*Columbia Buddy Walk*

*"If it weren't for Family Connection I know life would be much harder. I no longer feel alone or helpless. There are people besides your own family who care enough to reach out a hand and say, 'I have two shoulders and you're welcome to one'" - a parent of a child with Epilepsy and Cerebral Palsy from 2002 Annual Report.*



*Charleston Disability Awareness Walk*

## 1995 • 'Twenty Years'

Family Connection of South Carolina • 2010 Annual Report • Page 7

### Highlights:

Katharine M. Zeigler served as Board President.

The first "Of Hopes & Dreams and Tears & Fears" Conference was attended by over 200 participants. The conference offered a forum for parents and professionals to explore the joys and sorrows of caring for children with developmental disabilities, chronic illness, and long term health care needs.

Family Connection Support Parents were matched to over 175 referred parents.

Nearly 60 parents completed the 12-hour Support Parent training.

The Minority Outreach Initiative with Columbia Housing Authority homes resulted in 70 new families and the establishment of support groups in several housing

communities.

The Holiday Social, May Picnic, and other social events brought 600 family members together for fun and to recognize volunteers.

The Family Partner Program provided support for over 486 families around the state.

In partnership with The Children's Hospital of Greenville Hospital Systems, Family Connection initiated expansion in Greenville to develop programs for families of children who have special needs.

*The Link*, Family Connection's newsletter, was distributed to over 4,000 families, professionals and donors.

Income for the year totaled \$388,693, while expenses totaled \$374,180.



# Improving Lives of Families

## Parent Connections

When you think of a support group, you may think of a circle of chairs where everyone shares. Our Parent Connections do not always fit that model. Across the state, parents are meeting for coffee, playgroups, a night out, or an informational workshop. At a Parent Connection, you often find dynamic presenters talking about the most relevant and critical concerns of parents with a child with a disability. Parents learn from each other, support each other and share information. There are over 50 different groups statewide, including Neonatal Intensive Care Unit (NICU), asthma, ADHD, Down syndrome and autism, among many others.

In FY 2010, support groups offered more than 1,356 parent connections, and 371 children received childcare by local volunteers coordinated by local area staff.

## Fathers Network

Family Connection recognizes the importance of fathers in the dynamics of families. In 2000, the Fathers Network was created to provide fathers of children with special needs a dedicated support resource and specially tailored workshops. Fathers Network aims to empower men with the tools and knowledge to make a difference in their families.



*Columbia Buddy Walk*

## Parent-to-Parent

Support Parents are the heart of Family Connection. The Family Connection mission of strengthening families is accomplished primarily through Support Parent matches. Support Parents are parents of children with special needs who receive comprehensive training and provide emotional support and assurance to referred parents. Last year, more than 450 Support Parents volunteered their time, guidance and encouragement to other parents who needed support.



*Junior League of Columbia BBQ & Bluegrass*

## Family Social Events

Family Connection hosts many events during the year to provide families with opportunities to have fun and good fellowship. Family Picnics and Fishing Rodeos, Breakfast with Santa in December and with the Easter Bunny in April, Spring Carnivals and Holiday Socials are held across the state and are enjoyed by thousands of children and parents. Parents and children have fun together and experience life with others just like them. More than 4,370 attended these events. Special thanks to all the staff and volunteers who provide this wonderful service.

## Respite Connections

A Respite Connection provides much needed respite for parents. A cooperative of dedicated parents and volunteers provide a variety of activities for the children in a safe and fun environment while parents have a couple of hours free. A notebook of facts about the children is reviewed before the respite begins. Family Connection began organizing respite cooperatives in 1998 with a grant from the Office of the Governor Developmental Disability Council. Additional funding came from the Robert Wood Johnson Foundation. This year Family Connection received a Lifespan Respite grant. Currently, there are 11 Respite Co-ops coordinated locally from the area offices.



## Highlights:

Steve Sullivan served as Board President.

Family Connection received more than 1,000 referrals, and Support Parents were matched to over 400 referred parents.

Seventy-five parents completed the 12-hour Support Parent training.

The Minority Outreach Initiative into Columbia Housing Authority homes resulted in 35 new families, and the operation of support groups in several housing communities.

The Family Partner Program provided support for over 466 families throughout the state.

The partnership with The Children's Hospital of Greenville Hospital Systems provided program funding outreach in Greenville. Staff matched each of the 117 referred parents to one of 60 Support Parents, and

hosted a successful Valentine Social for 200 family members.

The Children's Hospital of Richland Memorial in Columbia also provided for program expansion by funding a part-time Parent-to-Parent Coordinator to meet the needs of the rising number of referrals and Support Parents.

"Of Hopes & Dreams and Tears & Fears, II" was attended by over 250 participants.

Over 35 Family Connection Support Parents and Family Partners joined 1,000 other parents from throughout the US and three continents to attend the 1996 International Parent-to-Parent Conference in Albuquerque. Family Connection presented at four workshops.

Income for the year totaled \$528,247, while expenses totaled \$494,647.

# Our Story - Meet the Austins

Al and Beth are the proud parents of two sons, Bert and Pat. Bert, 30, has Lenox Gaustaut (uncontrolled seizure disorder and mentally challenged). Pat, 25, recently married Candice. Knowing their family helps you better understand how Family Connection has made a difference in their life.

Beth was a Support Parent with another organization in North Carolina before moving to South Carolina, and had also experienced the importance of Support Parents in her life.

When their children were very young, the Austins moved to Florence. Beth learned about Family Connection in 1992 and immediately became connected as a Support Parent to help other parents, just as others had helped her.

Beth then became a Family Partner and helped parents with younger children involved with BabyNet.

Bert and Pat always had a wonderful relationship with each other. When children would notice Bert being 'a little different' and would ask Pat "why does your brother do that?", Pat's answer was always "that's just Bert!" Beth loved Pat's answer and never wanted his relationship with his brother to change.

When Pat was six years old and starting school, Beth wanted a program to help children better understand why some people act different. Inspiration came and she dreamed of the program, "Awareness: The Key to Friendships".

Beth went to Connie Ginsberg,

the Executive Director of Family Connection. They wrote a grant to the South Carolina Department of Education, Office of Exceptional Children in 1999 to obtain funding for "Awareness: The Key to Friendships" to be placed in schools across South Carolina. The program teaches children how it feels to have a disability and develops empathy and greater understanding. With the support of Family Connection and the State Department of Education, the program has been held in over 330 schools and has reached thousands of students, teachers, administrators and community volunteers.

Beth has said that it is very hard for her to pinpoint the many ways her family has benefited from being a part of Family Connection. But several ways came to mind:

- ◆ Emotional support for her and Al
- ◆ the annual "Hopes and Dreams" conference where she and Al have met many people and learned volumes that helped them better care and advocate for Bert
- ◆ the "Awareness: The Key to Friendships" program from which their children benefited in their schools. Beth has enjoyed coordinating the program and experiencing the difference it has made for others
- ◆ the friendships and relationships she has had with other parents that have deepened over the years and continue to support her now that Bert is an adult
- ◆ the opportunity to see needs and make a difference by being involved in



*Al, Bert, Beth, and Pat Austin*

programs in her local community and state.

The Austins are involved with "Forever Friends"- an adult ministry for those with special needs at their church. And Beth serves on the Board of Aldersgate Special Needs Ministry - a ministry within the South Carolina Methodist Conference focused on building and maintaining group homes for those with disabilities and special needs.

For Beth, her involvement in Family Connection has helped to make her, Al, Bert, Pat and Candice a family . . . a very happy family connected to others in all they do!

## 1997 • 'Twenty Years'

Family Connection of South Carolina • 2010 Annual Report • Page 9

### Highlights:

Steve Sullivan served as Board President.

Family Connection received more than 1,200 referrals, and Support Parents were matched to over 550 referred parents.

Seventy-seven parents completed the 12-hour Support Parent training.

The Minority Outreach Initiative with Columbia Housing Authority homes resulted in 65 new families, and the operation of support groups in several housing communities.

The Family Partner Program provided support for over 581 families throughout the state.

With continued support from The Children's Hospital of Greenville Hospital Systems the foundation was laid for an expanded

Upstate. An area office was opened and staff secured. Staff made matches for 147 parents and hosted a successful Valentine Social for 500 family members.

With the help of Children's Hospital of Richland Memorial in Columbia the number of referrals from hospitals continued to rise. Family Connection staff/volunteers visit critically ill infants in the NICU when the parents live too far away to visit each day.

Family Connection was chosen by the Institute for Families in Society to participate in the Mentor Program to help build the South Carolina Community-Based Family Resource Programs Network.

Income for the year totaled \$547,598, while expenses totaled \$570,403.



# Improving Lives of Children

## Project Breathe Easy

Project Breathe Easy (PBE) is the only program of its kind in the United States in the treatment of asthma. Initiated in Fiscal Year 1998 by Family Connection, PBE utilizes Family Connection's strength of parent-to-parent support to improve children's health.

A Community Parent staff member, who has a child with asthma, is trained to provide basic asthma education, as well as emotional support and assurance to families. The Community Parent connects with a referred parent and provides support for several months. Families receive a PBE notebook containing essential information about asthma, and allergy-proof mattress and pillow encasements.

Since its inception, PBE has received more than 5,480 referrals. In fiscal year 2010, the program received 1,003 referrals and made 650 parent-

to-parent matches. Project Breathe Easy is available to families in 26 counties throughout the state.

PBE has proven to be highly effective as it assists, educates and encourages families who have children with asthma. Nominated by Palmetto Health, the program won the Monroe Trout Cares Award of the Premier Corporation in 2005 and was recognized as an outstanding program that targets minority families affected by asthma.

Project Breathe Easy is funded in part by Palmetto Health Alliance, the S.C. Department of Health and Human Services, and the Greenville Hospital System.

*"That first call to Family Connection was the best thing I have done for both my daughter and myself."*

*- from 1991 Annual Report.*

## Kid Connection

This is a special workshop focused on the unique needs of siblings of children who have special needs. Kid Connection is a fun small group of kids ages 8-12 who meet in a safe environment to explore their feelings and concerns about having a sibling with special needs. Last year, 28 siblings participated in day-long workshops in Columbia, Greenville, and Rock Hill.



Greenville Valentine Social

## Awareness: Key to Friendship

Have you ever tried to button your shirt with limited use of your hands? What about icing a cookie without using your eyes? Many people will never fully understand what living with a disability is like. The Awareness: The Key to Friendships program aims to change that. The program is offered through school districts across the state and offers hands-on, interactive activities to illustrate the daily challenges experienced by someone living with a disability.

A teacher and parent who participated in the Awareness: The Key to Friendships program commented that the activities really opened her eyes.

*"My son has ADHD and I am always saying, 'You can do it if you really want to.' I honestly tried my best to focus yesterday with the simulated distractions and just could not do it," she said.*

During Fiscal Year 2010, the program was provided to 753 teachers and Teacher Cadets, and to 2,801 students in 39 South Carolina schools. The program is sponsored by Family Connection and the South Carolina Department of Education, Office of Exceptional Children.

*"I always feel better once I have talked with another parent who understands."*

*- from 1997 Annual Report.*

## Highlights:

Board President was Barbara Cross.

Family Connection received 1,345 referrals, and Support Parents were matched to over 400 referred parents.

Sixty-seven parents completed the 12-hour Support Parent training.

The Minority Outreach Initiative resulted in 50 new families, and the operation of support groups in several housing communities.

Family Connection received the David W. Robinson Catalyst Award from the Central Carolina Community Foundation for its work. Family Connection was recognized for 'best practices' at the International Parent to Parent conference.

Project Breathe Easy was founded to

educate families on how to treat and prevent asthma attacks that affect children.

The Family Partner Program provided support for 655 families.

Family Connection activity continued to grow in Greenville. Staff made matches for 364 parents to one of 92 Support Parents. The Valentine Social continued to be popular, attracting 500 family members.

SibShop was offered as a statewide training for parents and professionals interested in addressing the special needs of siblings of children with disabilities.

Referral opportunities continued in hospitals around the state. Critically ill infants in the NICU when the parents live too far away to visit each day.

Income for the year totaled \$763,333, while expenses totaled \$712,088.



# Improving Lives of Children

## Family Partner Program

The Family Partner program is a partnership between Family Connection and the SC First Steps BabyNet Program, the state's early intervention program for infants and toddlers ages birth to three with developmental delays.

Family Partners are parents of a child with special needs who have gone through BabyNet and have completed extensive Support Parent training with an additional 15 to 20 hours of training per year. Family Partners conduct home visits to parents referred to BabyNet, providing a vital opportunity for parents to speak one-on-one. In that role they become an important part of the parents' adjustment process in having a child with special developmental needs.



Charleston Disability awareness Walk

They offer emotional support and encouragement, and provide assurance by communicating with service providers, the medical community and other professionals and help the parents navigate through the complex system of services. Family Partners are more than just resources for referred parents. They also serve as a resource to early interventionists, medical service providers and other professionals.

Having children who have benefitted from BabyNet, Family Partners are good ambassadors of the importance of early intervention to parents and their communities. In FY 2010 Family Partners responded to 415 referrals. Since 1992, Family Partners have connected with more than 9,200 families.

## NICU

Family Connection has partnered with March of Dimes and other health care organizations to establish parents as medical team members in Neo-natal Intensive Care Units (NICU) and outpatient clinics. Parents are currently working with Children's Hospital of the Greenville Hospital System; Palmetto Pediatrics, Palmetto Health Richland; and Spartanburg Regional Healthcare System. These parents provide bedside support to new parents in the NICU, as well as one-on-one support to parents in clinics. Parent Connection support groups are also offered within hospital settings.

## We Made Connections

**2,749** families referred to Family Connection of South Carolina.

**1,627** families matched for parent-to-parent support.

**164** different referral sources.

**209** different diagnoses.

**52** different Family Connection sponsored support groups met this year with **1,356** adults in total attendance and **371** children in volunteer supported childcare.

**38** parents completed training as new Support Parents.

**1,094** parents have been trained as Support Parents since the inception of Family Connection.

## 1999 • 'Twenty Years'

Family Connection of South Carolina • 2010 Annual Report • Page 11

### Highlights:

Board President was Barbara Cross.

Family Connection received 1,261 referrals, and Support Parents were matched to over 350 referred parents.

Thirty-two parents completed the 12-hour Support Parent training.

The Minority Outreach Initiative resulted in 90 new families, and the operation of support groups in several housing communities.

Project Breathe Easy continued to offer emotional support and education to parents about asthma. The program has proven to help parents recognize asthma triggers and how to prevent them.

The Family Partner Program provided support for over 646 families throughout the state.

Other Family Connection programs - Physicians' Education and Awareness Program, the annual 'Of Hopes & Dreams' Conference, Support Groups, Family Social Events, parent support in hospitals, Kid Connection, Community Awareness - all continued on through the activity of an army of volunteers throughout the state. *The Link* newsletters reached 9,000 families, professionals, and donors.

Respite Cooperatives were initiated with a grant from the Office of the Governor Developmental Disabilities Council. These Cooperatives offer parents time away from caregiving while other parents care for their children.

Income for the year totaled \$801,937, while expenses totaled \$882,758.



# Around the State

## Anderson

- The Buddy Walk was held in October with 400 people in attendance. Hosted an Asthma event for families that have children with Asthma at Oakwood Baptist Church with 60 adults and children.
- Held the Anderson Holiday Social on December 6th with 300 people in attendance.
- Hosted the Oconee Holiday Social at Open Door Baptist Church, in collaboration with the Early Interventionists at Oconee Disability and Special Needs Board, with more than 150 parents and children enjoying the event.
- Hosted two February Valentine Socials; one in Anderson with 38 people; and one in Oconee County with 46 people in attendance.
- Hosted an Easter Bunny Breakfast in March with 220 parents and children in attendance.
- Held a Fishing Rodeo in Oconee with 75 people in attendance.

## Greenville

- Project Breathe Easy, in partnership with Select Health, held a back to school event in August.
- Breakfast with Santa was held in December.
- Hosted a Valentine Social with 75 adults and 111 children in attendance.
- Northern Anderson EMS hosted a Golf Auction and Tournament in May. 300 people attended the Auction and 160 took part in the Tournament, raising over \$30,000.

## Spartanburg

- Hosted the BuddyWalk on October 11th with close to 400 in attendance.
- Arranged for a movie night, a talent night and a Home Depot night for SEEYA (Social Events for Exceptional Young Adults). Average attendance was 30 people at each event.

## Statewide

- Family Connection engages in many activities throughout the year. On a regular monthly basis Area offices coordinate many Parent Connections, topic specific workshops, and various seminars. In addition, occasional Kid Connection, Teen Connection and family social events are held.

## Columbia

- In the summertime, held a Swim Party for families at Trenholm Park and a Family Bowling Night.
- Family Connection participated in the EdCeptional Kids Month at Adventure Children Museum throughout the month of September.
- Held Fall Festival in collaboration with Palmetto Pediatrics on October 3 with about 200 in attendance.
- The Columbia Buddy Walk was on October 25th with about 600 attending.
- The Columbia Cocky and Tiger BBQ Cook off was on November 20 & 21. Attendance was approximately 350.



### Highlights:

Family Connection celebrated its 10th Anniversary. Frank Baker served as Board President.

Family Connection received over 1,500 referrals, and Support Parents were matched to over 412 referred parents.

Forty-five parents completed the 12-hour Support Parent training.

The Minority Outreach Initiative resulted in 169 new families, and the operation of support groups in several housing communities.

Project Breathe Easy continued to offer emotional support and education to parents about asthma.

The Family Partner Program provided support for over 696 families by 43 Family

Partners throughout the state.

To serve families in the Pee Dee area, Family Connection opened a Florence office in September 1999. An important alliance was established with McLeod Regional Medical Center. A total of 54 Support Parent and Family Partner matches were made in the Pee Dee.

The area office in Greenville continued through partnership with the Children's Hospital of Greenville Hospital System. More than 100 trained Support Parents and Family Partners helped with 331 matches in the Upstate.

Income for the year totaled \$1,060,210, while expenses totaled \$1,005,712.

Special thanks to the Nord Foundation for 10 years of support.

# Around the State

## Statewide

- Family Connection also pursues opportunities to promote disability awareness and the support which Family Connection can provide to parents.
- There are also a number of other events which aim to raise financial support for the operation of Family Connection throughout the state and throughout the year.

## Columbia

- A Valentine's Party was organized at Denny Terrace with 55 people attending.
- The annual 'Of Hopes and Dreams' conference was held in March. It was attended by over 326 parents and professionals.
- A BBQ & Blue Grass Family Social treated 200 people to great food and music provided by the Junior League of Columbia.
- The Annual Benefit and Auction in April attracted over 150 people.
- Organized a Spring Carnival in May with 70 people attending.
- An Asthma Awareness Picnic was held May 1 with 139 people in attendance.



Columbia Special Kidz

## Rock Hill

- The Big Thursday party was on November 12th, 180 people attending for a great time.
- Breakfast with Santa was on December 12th with 101 people present.
- Held a Family Social at the Lancaster Ryan's Restaurant in March with 63 people present.

## Charleston

- A Family Picnic was held in Myrtle Beach with 20 in attendance.
- The 3rd Annual Family Fishing Rodeo on October 12th attracted about 100 people, and a few fish.
- A Breakfast with Santa was hosted on December 12th and was attended by 105 people.
- Took 104 children and parents to see The Rockettes on January 3 at the North Charleston Coliseum. The kids absolutely loved it.
- The Charleston Easter Egg Hunt was on March 21st and was attended by 70 people.
- The Disability Awareness Walk June 5th was a great event attended by 250 people.



Charleston Fishing Rodeo

## 2001 • 'Twenty Years'

### Highlights:

Howard Jernigan served as Board President. Family Connection received over 1,589 referrals, and Support Parents were matched to over 586 referred parents.

Fifty-nine parents completed the 12-hour Support Parent training.

The Minority Outreach Initiative resulted in 156 new referrals, and the operation of support groups in several housing communities.

Project Breathe Easy provided support for 147 families. The results were happier, healthier children who missed fewer school days, and parents who missed fewer work days. Emergency room visits were reduced by as much as 70%.

The Family Partner Program provided support for 588 families throughout the

state.

With offices in Greenville and Florence, work began on expanding into Anderson and Spartanburg. Parents and community leaders formed councils to provide input and support for Family Connection programs.

Medical students at USC School of Medicine, Palmetto Richland Memorial, and Greenville Hospital System visited Family Connection homes to better understand the life of a family caring for a child with special healthcare needs.

Family Connection was awarded the 2001 Angel Award by the SC Secretary of State. 92% of expenditures went directly to programs and a high number of volunteers were utilized in programs and fundraising efforts. Congratulations!

Income for the year totaled \$1,037,277, while expenses totaled \$1,103,908.



# Improving Parent/Professional Relations

## PEAP & FREE

Medical students and pediatric residents gain a new perspective through the Physicians Education Awareness Program (PEAP) and the Family and Resident Educational Experience (FREE) program. In FY 2010, sixty medical students and two pediatric residents went into the homes of children with special needs. They began to see that the parents are the one constant in that child's life, and that partnership between parents and health care professionals leads to better health outcomes for the child. The PEAP and FREE programs are held at the Children's Hospital of the Greenville Hospital System and Palmetto Health Richland.

## Medical Home Network

Family Connection has been a partner in establishing the state's only managed care medical home network, South Carolina Solutions. A model program has been implemented at the Palmetto Health Richland's Children's Hospital Outpatient Center with nursing care coordination and a parent of a child with special needs to support families in every aspect of medical care. Family Connection encourages all parents to establish a medical home, a type of primary care that is accessible, continuous, comprehensive, family-centered, coordinated, compassionate and culturally effective.



## Family Voices

Family Connection serves as the South Carolina chapter of Family Voices, providing tools for families to help them make informed decisions, and serving as a voice for children with special health care needs.



Kevin & Geneva Adams and Cheryl Powell

## Conference

In March of 2010, more than 325 parents, professionals and service providers who care for children with special needs attended Family Connection's successful 15th annual conference. The theme, "Celebrate Achievements", focused the participants on the little and large achievements made by the children. The speakers offered valuable information for parents and professionals on a wide range of topics related to children with special needs, including new diagnoses, transition, inclusion, stress management, advocacy and family fun.

## Volunteers

Family Connection of SC is a family-focused, volunteer driven organization providing support, encouragement and education to parents of children with special needs. In FY 2010, nearly 820 people provided over 2,900 hours of volunteer service.

This mission of strengthening families is accomplished primarily through Support Parent matches. Support Parents are volunteers who are parents of children with special needs and who undergo training to provide emotional support and assurance to referred parents. Support Parents are an invaluable resource, having faced similar challenges and celebrations in their lives. They are the core of parent-to-parent support.

Hundreds of people also volunteer to organize events, run workshops, mail letters, answer phones, solicit donations, and help with a myriad of other tasks.

Family Connection has been enhanced considerably by the community involvement of local businesses and service groups. Food and beverages, auction items for fund raising events, and even family social activities have been provided by these friends of Family Connection. Thank You!

Family Connection has room for more volunteers! What's your talent? Contact Family Connection to find out how you can be of benefit to families who have a child with special needs.



## Highlights:

Howard Jernigan served as Board President.

Family Connection received over 1,789 referrals, and Support Parents were matched to over 737 referred parents.

The Minority Outreach Initiative resulted in 68 new referrals.

Project Breathe Easy (PBE) responded to 407 new referrals. The program provides emotional support and information to parents, and encourages the development of better physician relationships. Since it began, PBE activities resulted in a 66% reduction of emergency room visits, 92% reduction in missed school days, and 56% decrease in lost work days.

The Family Partner Program provided support for 601 families by 42 Family Partners throughout the state.

In addition to the offices in the Midlands, Greenville and Florence, offices were opened in Anderson and Spartanburg, and work began on expanding into Aiken and Charleston. Parents and community leaders formed local councils to provide input and support for Family Connection programs.

Fathers Network, created to provide fathers of children with special needs a dedicated resource, sought to empower men to make a difference in their families.

Camp Family Connection hosted 45 parents and 65 children with special needs on a weekend camping experience. The campers were assisted by volunteer 'Camp Friends'.

The annual conference provided training and information to over 300 parents, professionals and service providers.

Income for the year totaled \$1,249,673, while expenses totaled \$1,252,288.

# Staff

**\*Jackie Richards**  
- Executive Director

**\*Lisa Anderson**  
- Upstate Parent to Parent Coordinator

**\*Beth Austin**  
- Disabilities Awareness Coordinator

**Bonnie Barker**  
- Finance Manager

**Les Barker**  
- Conference Coordinator

**Shannon Batson**  
- Disabilities Awareness Coordinator

**\*Nicole Bougie**  
- Program Assistant

**\*Stephanie Bridgers**  
- PEAP/FREE Coordinator

**\*Melissa Bushnell**  
- Parent Partner

**\*Deborah Carson**  
- PBE Community Parent

**Vanessa Clark**  
- Program Assistant - Midlands

**\*La'Kisha Cross**  
- PBE - Midlands Coordinator

**\*Michelle Drayton**  
- PBE - State Outreach Coordinator

**\*Patricia Fernald**  
- Parent Partner

**\*Pamela Fields**  
- Program Assistant - Upstate

**\*Sherry Fields**  
- Area Coordinator - Upstate

**\*Irene Fullmore**  
- PBE Community Parent

**\*Beverly Fullwood-Harper**  
- Parent Partner/Parent Followup

**\*Yolanda Gordon**  
- Program Assistant - Rock Hill

**(Emily Green)**  
- Family Advocacy Coordinator

**\*Keidra Green**  
- PBE - Community Awareness Coordinator

**\*Susan Haney**  
- State Parent to Parent Coordinator

**\*W.C. Hoecke**  
- Family Information and Education

**(\*Debra Jernigan)**  
- Program Assistant - Midlands

**\*Michelle Johnson**  
- Program Assistant - Upstate

**\*Susan Kastner**  
- Program Assistant - Upstate

**\*Pam Kruzan**  
- PBE Community Parent

**Meagan Labriola**  
- Area Coordinator - Charleston

**\*Sherry Larson**  
- Family Partner Program - State Coordinator

**\*Cheryl Major**  
- Program Assistant - Upstate

**(Robin O'Neil)**  
- Development Director

**\*Maggie Ortiz**  
- Hispanic Outreach Coordinator

**\*Penny Ott**  
- Parent Partner

**(\*Johanna Perez)**  
- Program Assistant - Upstate

**(\*Katie Poindexter)**  
- Program Assistant - Upstate

**\*Mindy Ramsey**  
- Program Assistant - Upstate

**\*Crystal Ray**  
- Medicaid Liaison Resource Parent

**\*Hollye Reid**  
- Development Coordinator/Special Events

**Pennie Roberts**  
- Family Partner Program - Assistant

**\*Kelley Shaw**  
- Program Assistant /Community Awareness Coordinator

**Judith Snyder**  
- Disabilities Awareness Coordinator

**(Lauren Steadman)**  
- Community Relations Manager

**\*Muriel Taylor**  
- IT Manager

**\*Anita Williams**  
- Down Syndrome Clinic

*\* Indicates a parent or relative of a child who has a disability, or an individual with a disability  
( ) Indicates the person is no longer on staff.*

## FAMILY PARTNERS

**\*Corrie Anderson**, York  
**\*Kim Anderson**, Cowpens  
**\*Michelle Barnes**, Dorchester  
**\*Darlene Bazemore**, Pelion  
**\*Steffie Bridgers**, Columbia  
**(\*Tonya Brooks**, North Charleston)  
**\*Rebecca Brown**, Dazell  
**\*Melissa Bushnell**, Greer  
**\*Brenda Copeland**, Piedmont  
**\*Kim Dove**, Anderson  
**\*Marsha Edens**, Chesnee  
**\*Patricia Fernald**, Elgin  
**\*Carrie Garrett**, Swansea  
**\*Yolanda Gordon**, Rock Hill  
**\*Jacqueline Jackson**, Aiken  
**\*Carolina Jara**, Greer  
**\*Roberta Jenkins**, Pineville  
**(\*Kerry Johnson**, Whitmire)  
**\*Michelle Johnson**, Anderson  
**\*Mary Kendrick**, Roebuck  
**\*Cheryl Major**, Greenville  
**\*Laura Mariotti**, Conway  
**\*Amy Melton**, Lamar  
**(\*Donna Metta**, Taylor)  
**\*Robin McInville**, Greenwood  
**\*Blanca Milner**, Columbia  
**\*Barbara Morgan**, Fairplay  
**\*Lori Mosley**, Townville  
**(\*Ryan Page**, Goose Creek)  
**\*Johanna Perez**, Taylors  
**\*Kelly Potter**, Irmo  
**\*Mindy Ramsey**, Simpsonville  
**(\*Kim Reagin**, Summerville)  
**\*Wendy Stokes**, Hartsville  
**\*Cindy Tomlinson**, York  
**\*Saritta Vann**, Summerville  
**\*Jennifer Weaver**, Myrtle Beach  
**\*Paula White**, Lyman  
**\*Anita Williams**, Columbia  
**\*Jessie Walker**, Spartanburg  
**\*Angela Wilborn**, Spartanburg

## 2003 • 'Twenty Years'

Family Connection of South Carolina • 2010 Annual Report • Page 15

### Highlights:

Ashley Houser served as Board President.

Family Connection received over 1,760 referrals, and Support Parents were matched to over 756 referred parents.

Sixty-six parents completed the 12-hour Support Parent training.

Project Breathe Easy responded to 395 referrals. Emergency room visits were reduced by 86%.

The Family Partner Program provided support for 459 families by 37 Family Partners throughout the state.

Family Connection continued to increase its impact throughout the state. With offices in the Midlands, Greenville, Florence, Anderson and Spartanburg, and new work in Aiken, Charleston and Greenwood, staff

and volunteers hosted family social activities, disability awareness events, support groups and seminars to support parents and children.

Family Connection also connects with hospitals, schools, churches, and government agencies to assist parents in finding the right services for their children. Hospitals and government agencies provide financial assistance so that Family Connection can continue to reach out to families in every county of South Carolina.

*The Link* newsletters reached 13,000 families, professionals, and donors.

Income for the year totaled \$1,505,548, while expenses totaled \$1,470,226.



# FY 2010 Donors

## July 1, 2009 to June 30, 2010

The support of our many donors made it possible for Family Connection to serve more families that have a child with special needs than ever before. We extend our deep gratitude to each of our donors.

### Grantors

Abney Foundation  
Saul Alexander Foundation  
Bank of America Foundation  
Build-A-Bear Workshop Bear Hugs Foundation  
Central Carolina Community Foundation  
Coastal Community Foundation of SC  
D. L. Scurry Foundation  
Hollingsworth Funds  
c/o Community Foundation of Greenville  
John S. and James L. Knight Foundation  
Junior League of Columbia  
Junior League of Spartanburg  
Junior Welfare League of Rock Hill  
Knights of Columbus Council 6847  
National Fatherhood Institute  
SC Center for Fathers and Families  
SC Department of Education,  
Office of Exceptional Children  
SC Department of Disabilities and Special Needs  
SC Department of Health and Environmental  
Control, Bureau of Maternal and Child Health  
SC Department of Health and Human Services  
SC Developmental Disabilities Council  
SC Healthy Connections Choices - Maximus  
SC Lieutenant Governor's Office on Aging -  
Lifespan Respite  
US Department of Health and Human Services,  
Health Resources and Services Administration

### Champions

**\$10,000+**

Blue Cross Blue Shield of South Carolina  
Childrens Hospital of the Greenville Hospital  
System  
Northern Anderson EMS  
Palmetto Health  
Select Health

### Benefactors

**\$2,500 - \$9,999**

Anonymous  
Brabham Fence Company  
Mr. and Mrs. Philip Bramsen  
Janet Chapman  
Community Health Solutions of America  
Dennis Corporation  
Connie and Leon Ginsberg  
Joyce and Bob Hampton  
Kohl's  
Knights of Columbus Council 13713  
Palmetto Smiles - Pediatric and Family Dentistry  
Scansource, Inc.  
Security Federal Bank, Inc.

### Grand Patrons

**\$1,000 - \$2,499**

Absolute Total Care  
Baker & Baker Foundation  
Bank of America  
BankMeridian  
BB&T  
BiLo Charities, Inc.  
Carolina First Bank  
Carolina's Healthcare System Foundation  
Coca-Cola Bottling Company  
Dr. and Mrs. Warren Derrick, Jr.  
Edens and Avant  
Dr. Alfonso Gonzalez and  
Lulis del Castillo-Gonzalez  
Joy Guerry  
Honda of Columbia  
Integral IT Consulting, LLC  
Knights of Columbus Council 6756  
Lance, Inc.  
Lewis & Babcock, LLP  
Mrs. Claudia Maloney

Moe's Southwest Grill  
Motley Rice, LLC  
No Stone Unturned Foundation  
Piedmont Medical Center  
Richland School District Two  
SEACO, Inc.  
South Carolina Electric & Gas Company  
Amelia S. Tabor  
Verizon  
Wal-Mart at Harbison  
WAL-MART FOUNDATION  
Dr. and Mrs. Donald Wuori

### Patrons

**\$500 - \$999**

Aaron's  
Absolute Total Care  
AT&T  
BB&T  
Blue Choice Medicaid  
BP&S Rehab  
Dr. and Mrs. A. McKay Brabham  
Mr. James E. Bramsen  
Bonnie and Doug Bryant  
Bryant Pharmacy and Supply  
Bulldog Tours, Inc.  
Mrs. Bertie H. Bunch  
Susan and Victor Caceres  
Charleston Medical Society Alliance  
Columbia Opportunity Resource  
Cornerstone Children's Dentistry  
Esther and Dan Dennis  
Mr. and Mrs. David E. Dukes  
Mr. and Mrs. John Dunbar, III  
Elliott Davis, LLC  
Martha Faucette  
Dr. Jerry Ferlauto  
Furman University Student Activities Board  
Green's Beverage Stores



### Highlights:

Ashley Houser served as Board President.

Family Connection received over 1,947 referrals, and Support Parents were matched to over 520 referred parents.

The Minority Outreach Initiative resulted in 76 new referrals, and Project Breathe Easy responded to 320 referrals. Results were 82% fewer lost school days, and 96% fewer lost work days for parents. Emergency room visits were reduced by as much as 95%.

The Family Partner Program provided support for 385 families by 36 Family Partners throughout the state.

With offices in the 8 locations around the state, Family Connection's impact continued as staff and volunteers hosted family social

activities, disability awareness events, support groups and seminars to support parents and children.

Awareness: The Key to Friendship is a program for school-aged children to teach sensitivity and understanding for people with disabilities. In Fiscal Year 2004 there were 76 presentations in South Carolina schools of 17,000 children.

Family Connection provided monthly seminars for social work professionals to address issues relating to children with special needs, including family dynamics and family centered care.

Income for the year totaled \$1,398,416, while expenses totaled \$1,467,209.

Catherine A. and Douglas B. Hansen  
 Harris & Graves, P.A.  
 A. Elliott Holman, III  
 Homeowners Mortgage  
 Hubbell Power Systems  
 Drs. Kyllan and Christopher Hutchinson  
 Donna and Keith Jowers  
 Just Kids Therapy Services, Inc.  
 Laurens Academy  
 Mr and Mrs Randolph Liggitt  
 Mr. Kenneth and Dr. Laura Bird Long  
 McAbee, Talbert, Halliday & Company  
 NBSC  
 New Morning Foundation  
 Red Bank Christian Learning Center  
 Riley Pope & Laney, LLC  
 Wendy and John Ruple  
 Scotsman Ice Systems  
 Scott & Stringfellow, Inc.  
 Sisters of Charity Providence Hospital  
 TitleMax  
 Unitherm, Inc.  
 Valpak of Greater Columbia

## Supporters

\$250 - \$499

A.B.A.T.E. of Lexington  
 Phyllis Alexander  
 American Institute of Architects - South Carolina  
 Chapter  
 Ameris Bank  
 Lisa and Jimmy Anderson  
 Anthem Blue Cross Blue Shield  
 Boineau Moving and Storage  
 Bridgestone Firestone North American Tire, LLC  
 Bright Start, LLC  
 Becky and Rick Brown  
 Bryann, Katie and Jim Burgess  
 The Charles Lea Center, Inc.  
 Columbia Eye Clinic & Surgery Center  
 Consultants in Gastroenterology  
 Creative Treasures  
 CRNA Choice, LLC

Dr. and Mrs. Richard Cross  
 DentaQuest  
 Dr. John F. Dunbar  
 Eastman Chemical Foundation  
 Goody 2 Shoes  
 Susan and Jack Graybill  
 Drs. Debbie and David Greenhouse  
 Kathy and Ashley Houser  
 Laurens County Health Care System  
 MCEC Guide Wire  
 Jodie McLean  
 Mr. Tom Moran  
 Dr. Rocky Napier  
 Pediatric Associates of Anderson, P.A.  
 Dr. Mary Pittenger  
 Playworks, Inc.  
 Mr. and Mrs. Stuart Point  
 Holly and Andy Pope  
 S2 Engineering & Consulting  
 Mr. and Mrs. George Sands, Jr.  
 Seven Doors Salon  
 Patricia Shahbahrami  
 Mr. and Mrs. Keith Shaw  
 David A. Simon, Jr.  
 Spartanburg Regional Health System  
 Allison Thompson  
 Thompson Turner Construction  
 Trenholm Road United Methodist Church  
 Wayside Baptist Church

## Sustainers

\$100 - \$249

Active Day of the Lowcountry  
 Burgess and Charles Alessandro  
 All Care Living Services  
 Allergy Partners of the Upstate  
 Andrews Fabricators of Kingstree, Inc.  
 Andrews Metal Works, Inc.  
 Anmed Health Home Care Services  
 Ann's Cafe  
 Anonymous  
 Mr. and Mrs. Philip Asherman  
 B&T Electric  
 Bank of Greeleyville

Suzanne and Claude Barden  
 Shannon, Caitlin, Danielle, and Gene Batson  
 Boiling Springs United Methodist Church  
 Youth Ministries  
 Stephen Bott  
 Stephanie and Michael Bridgers  
 Pauline Brooks  
 Mr. and Mrs. Kenneth A. Brown  
 James F. and Nelle E. Burgess Foundation  
 William Byars  
 Mr. and Mrs. William Cantey, Jr.  
 Caring Hands Home Care  
 Mr. and Mrs. Paige Carlton  
 Ronald R. Carter  
 Carolina Cataract  
 Pamela and Donny Carpenter  
 Jane and Jim Caulder  
 The Clock of Laurens  
 Mr. and Mrs. R. E. Coleman, Jr.  
 Columbia Fire Department  
 Combined Federal Campaign  
 Comporium Pioneers  
 Concrete Designs, Inc.  
 Eleanor Bennett Craig  
 Pat and Herbert Crisp  
 Sherry and Jeff Crisp  
 Dr. and Mrs. David W. Cundey  
 Avery Dennison  
 Mr. and Mrs. Perrin Desportes  
 Barbara and Christopher Dickenson  
 Mr. and Mrs. David Dodenhoff  
 Barbara and Johnny Dover  
 Laine Dunbar and David Hancock  
 East Coast Special Tees  
 Edgefield First Baptist Adult III Sunday School  
 Kathleen Edwards  
 Dr. Martha and Mr. Nathaniel Edwards  
 Drs. Ellis, Green and Jenkins  
 Mr. and Mrs. Les Erving  
 Dr. and Mrs. Morrison Farish  
 Mr. and Mrs. Peter Fawcett  
 Patricia Fernald  
 Pam and Gene Fields

## 2005 • 'Twenty Years'

Family Connection of South Carolina • 2010 Annual Report • Page 17

### Highlights:

Ashley Houser served as Board President.

Family Connection received nearly 3,000 referrals, and Support Parents were matched to over 693 referred parents.

Sixty-seven parents completed the 12-hour Support Parent training.

Project Breathe Easy responded to 542 referrals.

The Family Partner Program provided support for 609 families by 45 Family Partners throughout the state.

Family Connection staff and volunteers hosted family social activities which attracted 4,660 individuals. More than 35 groups organized around specific disabilities or interests provided a place for nearly 2,300 parent encounters to occur.

*The Link*, Family Connection's quarterly newsletter was mailed to over 15,500 parents and professionals.

Family Connection became the South Carolina Chapter of Family Voices. Family Voices advocates for health care services that are family-centered, community based, comprehensive, coordinated and culturally competent for all children with special health care needs. Family Voices supports essential partnerships between families and professionals.

Family Connection also connects with hospitals, schools, churches, and government agencies to assist parents in finding the right services for their children.

Income for the year totaled \$1,589,789, while expenses totaled \$1,577,928.



Mr. and Mrs. Tom Fisher  
 Dr. and Mrs. Rodney Fitzgibbon, II  
 Susan and William Flemming  
 Coach and Mrs. Eddie Fogler  
 Jada and Kevin Garriss and Family  
 Greenwood Genetic Center  
 Leah and John Gutekunst  
 Mary and Steven Hackenberg  
 Susan and Mike Haney  
 Bettys Hardaway  
 Lori and Wesley Harrelson  
 Lyssa and Jonathan Harvey  
 Pat and Jim Head  
 Mr. and Mrs. Jay Heavilon  
 Mr. and Mrs. John S. Hill  
 Johnny Hobbs Painting & Contracting  
 Doris Holtzclaw  
 Homecare Medical Aids, Inc.  
 Hood Construction  
 Gertrude Jakielo  
 Linda and Chuck Jewell  
 Steven Juk  
 Mr. and Mrs. R. Kahn  
 Trista Kane and Dale Boyd  
 Ken's Pharmacy  
 Genevieve and Richard King  
 Robin and Billy King  
 Brenda Kinlaw  
 Kiwanis Club of Anderson-Golden K  
 L & L Contractors, Inc.  
 Elaine and Brian Landeene  
 Sylvia and Mike Landers  
 Josephine and Eddie Laney  
 Libby and David Lanier  
 Sherry Larson  
 Barbara and Brian Leary  
 Julia and Dixon Lee  
 Dr. Mark Locke  
 Dr. and Mrs. Howard Mandell  
 Susan Marciano and Lee Shcolnik  
 Betsy and Harry Mashburn  
 Kathy Mayfield-Smith  
 Mary McBean and Harry Exell  
 Elizabeth McCollum  
 McKenzie Backhoe & Dozier Service, Inc.  
 Dr. Marshall Meadors, III  
 Mike's Catering

Hampton and Carter Morris  
 Betty and James Moseley  
 Napa Auto Parts of Andrews, Inc.  
 New Business Opportunities GA, LLC  
 J. William Noeltner, Jr.  
 Alice Nolte  
 Celia and Charles O'Neal  
 O'Neal Seed Company  
 Robin O'Neil  
 Dr. and Mrs. William L. Otis, III  
 Outlaw Bar-B-Q  
 Palmetto Exterminators  
 Karen Park Family Dentistry, PA  
 Mr. and Mrs. Josh Parrott  
 Anne Pearce and Jeff Maddox  
 Phoenix Printing  
 Pilot Club of Kingstree  
 Mary Pittenger  
 Dr. and Mrs. Brian Pope  
 Kay Todd Pope  
 Robert Potter  
 Prioleau Insurance Services, Inc.  
 Professional Aviation Safety Specialists  
 R.H. Moore Company, Inc.  
 Jerrrie and V.C. Reese  
 Mr. and Mrs. Toy F. Reid  
 Brenda and Pete Richards  
 Dr. and Mrs. Peter Richards  
 Richland County Sheriff's Department  
 Betsy and Robert Ritter  
 Margie and Owen Ritter  
 Larry Roberts  
 Pennie and Dave Roberts  
 Anne Sinclair and Julian Ruffin  
 Sadler-Hughes Apothecary  
 Salley Law Firm, PA  
 Sandhills Pediatrics, P.A.  
 Mr. and Mrs. Arnold H. Schraibman  
 Larry Sconyers  
 Marilyn and Michael Senneway  
 Blair Shwedo  
 John Skipper  
 Some R Swine  
 South Carolina Charities, Inc.  
 Essie I. Spearman  
 St. Luke United Methodist Church  
 SuggsJohnson, LLC

Harriet and Al Thornton  
 Donita and Michael Todd  
 TS Alliance of the Carolinas  
 Mr. and Mrs. Bill Vanhook  
 Vereen's Plumbing Company  
 Dr. and Mrs. Robert Walker  
 Watford Industry, Inc.  
 Janette White, MD  
 Dr. and Mrs. Robert Whitehead  
 Williamsburg Air Service, Inc.  
 Ms. Audrey Williams  
 Dr. Katherine Williams  
 Wendy, Chris, Christian and Abigail Wilson  
 Helen Young  
 Tracy and Nick Zakes  
 Mr. and Mrs. Sean Zeigler  
 Rose Marie Zejewski

## Friends

### \$100 and under

Cindy Abdelwahab  
 Jane and Donald Acevedo  
 Gloria and Ervin Ackerman  
 Deborah and Dennis Adams  
 John Agurs  
 Jeannie and Doug Aiken  
 Martha and Gregory Aiken  
 Mary Alice and Randy Akers  
 Allergy Partners of Anderson  
 William Allison  
 Greg Andrews  
 Andrews Tire Service, Inc.  
 Anonymous  
 Suzanne and Steven Arsenault  
 Jo-Marie and Michael Ashworth  
 Hope Atyeo  
 Karen and Gene Auld  
 Beth and Al Austin  
 Keith Babcock and Jackie Dickman  
 Cathy Bachman  
 Sandra T. Ballington  
 Bonnie and Les Barker  
 Barr-Price Funeral Home  
 Holly Barrett  
 Barrineau's Marine and Small Engine, Inc.  
 Carter N. Bass  
 Rose Bass



Connie Ginsberg  
 Executive Director, 1992 - 2006

## Highlights:

Annette Patterson served as Board President.

Family Connection received 2,600 referrals, and Support Parents were matched to over 539 referred parents.

Fifty-one parents completed Support Parent training.

Project Breathe Easy responded to 555 referrals.

The Family Partner Program provided support for 492 families.

Awareness: The Key to Friendship, reached more than 1,300 teachers, 5,550 students, and 195 Teacher Cadet students.

Statewide, family social events were attended by 4,660 people. The events included holiday socials, fishing trips,

picnics, sports camps, skating and swimming parties, awareness walks and more.

2006 was a year of major change for the Family Connection family. Connie Ginsberg, Family Connection's first Executive Director, retired from shepherding the activities, direction and growth of Family Connection. For 15 years Connie gave her talents to help South Carolina families and the children with special needs by building parent to parent support networks and increasing community awareness for Family Connection and people with disabilities and special health care needs. Robert Kerr, Director of DHHS, and Senator Joel Lourie presented Connie with the Order of the Palmetto, the highest civilian honor awarded by the state.

Income for the year totaled \$1,488,630, while expenses totaled \$1,484,151.

Darlene Bazemore  
 Debbie Beak  
 Joan and Quay Beck  
 Mr. and Mrs. Clifford Bedell  
 Imogene Bednego  
 Bellacino's Pizza and Grinders  
 Bennett Group, LLC  
 Elvena Bickley  
 Lucy and Michael Bishop  
 Dianne and Gary Blackwell  
 Michele Bloomfield  
 Linda Shaw Boatwright  
 Boiling Springs United Methodist Church  
 Children's Ministry  
 Carole and Heyward Brabham  
 Caitlyn Brady  
 Jackie and Johnny Brannon  
 Liz and Armin Brecher  
 Beth and John Brennan  
 Brian Bridgeman  
 Jane Bridgeman  
 Heather and Doug Bridges  
 Marie Bridges  
 Sally and Clarence Bridges  
 Tammy and Scott Bright  
 Dan Brooks  
 June Broome  
 Sybil Brown  
 Mr. and Mrs. Frank Brunson  
 Dr. and Mrs. Ryan Burke  
 Alyce Burrows  
 Therese and Michael Busch  
 Ellen and Teresa Bush  
 Timothy Butler  
 Bevelry Byars  
 Mr. and Mrs. W. R. Byars, Jr.  
 Dr. and Mrs. Barry Cabiness  
 Constance Cable  
 Cindy and David Cain  
 Amy and Scott Caldwell  
 Billie and Dale Campbell  
 Doris and William Campbell  
 Melanie and Robert Campbell  
 Mr. and Mrs. Mark Cannady  
 Terrill and Larry Carder  
 Susie Carlson  
 Judy Carlton

Carolina Machine, Inc.  
 Bertha and Lloyd Carroll  
 Marcia Adams Cashin  
 Sheree Caughman  
 Mr. and Mrs. Jeff Chavis  
 Vanessa Chavis  
 Mr. and Mrs. R. Paul Chlan, Jr.  
 Bonny and Bert Clamp  
 Elizabeth Clark  
 Lyth Clark, Sr.  
 Clarke & Company  
 Martha and David Cobb  
 Avery, Amy and Christopher Coggins  
 Samantha and Lance Coker  
 Amy Coleman  
 Carole Collins  
 Phyllis and David Conner  
 Sharon Copeland  
 Angelo Costa  
 Sonya and Kyle Craft  
 Marion and John Crane  
 Dorothy Crite  
 Michelle and Todd Crocker  
 Gail and Harold Crook  
 Sarah and Johnny Crook  
 Rebecca Crosby  
 Karen and Chad Crossley  
 Beth and Mike Cruce  
 Cindi and Wayne Culp  
 Mr. and Mrs. David Cusack  
 CVS Pharmacy-Anderson  
 Becky Dailey  
 Bill D'Andrea  
 Keegan Daniel  
 Gay and Jimmy Davenport  
 Jay Davis  
 Linda and Troy Davis  
 Louis Davis  
 Kathy and John De Angelis  
 Jan and Joe Decoste  
 Jaclyn DeJong  
 Tom Denning  
 Laura Dennison  
 Mrs. Sylvia Anne Derrick  
 Valbea Dixon  
 Kathy and Thomas Dobbins  
 Mr. and Mrs. Talmadge Dove

Thelma Dugosh  
 Mr. and Mrs. David Dukes  
 Ronald Duncan  
 Jackie and David Durham  
 Dutton Construction Company  
 Mr. and Mrs. Maxie Eargle  
 Teresa and Kenneth Eddy  
 Tiffany Elliott-Mulkey  
 Dr. and Mrs. Stanley Etersque  
 Sherry Evenson  
 Doris Felts  
 Erin and Michael Fisher  
 Carla and Jeffrey Ford  
 Pat and Tom Fortson  
 Anne Foster  
 Russell Foster  
 Kay and Jim Franklin  
 Sandra and Marvin Free  
 Freedom Embroidery  
 Freeman Tire, Inc.  
 Jane Frommer  
 Fuel Depot, Inc.  
 Donna Fuller  
 Mary Jane and Gary Fulmer  
 Carole and John Gambrell  
 Debra Gardner  
 Cindy and Richard Garrison  
 Martha and Tommy Garvin  
 Carol Gattis  
 Lisa Gebing  
 Dr. and Mrs. James R. Gettys, Jr.  
 Mr. and Mrs. Gordon Gibson  
 Virginia Glass  
 Candace and Thomas Glover  
 Judy and Mitchell Glover  
 Retha and Clint Goff  
 Sandra and Danny Gosnell  
 Judge and Mrs. Sol Gothard  
 Alison, Jonathan, Emma, and Eli Gottsegen  
 Cherry and Jimmy Graham  
 T. K. Greene  
 Mr. and Mrs. Frank Barron Grier, III  
 Bennett Griffin  
 Wanda and Lewis Griffith  
 JoAnn Gunter  
 Marie and Roy Gunter  
 Eric Haltiwanger

## 2007 • 'Twenty Years'

### Highlights:

Annette Patterson served as Board President.

Family Connection received 2,627 referrals, and Support Parents were matched to 474 referred parents.

Sixty-two parents completed Support Parent training.

Project Breathe Easy responded to 579 referrals. Emergency room visits were reduced by 86%.

The Family Partner Program provided support for 511 families by 45 Family Partners throughout the state.

Family Connection sponsored 52 different Parent Connections where 2,535 parents learn from each other, support each other and share information. These included support groups around asthma, ADHS, Neonatal Intensive Care Units (NICU),

Down syndrome and autism, among others.

Family Connection received a grant from the Centers for Medicare and Medicaid Services to establish a Family-to-Family Health Care Information and Education Center. The goal of the Center is to provide the information and support that families of children and youth with special health care needs (CYSHCN) require to effectively partner in decision-making at all levels to achieve services for their children. This augments what Family Connection already does to provide training for parents on many important issues through Parent Connections, workshops, the annual Conference and through *The Link* which is distributed to 20,000 people.

Andy Pope was appointed Executive Director of Family Connection.

Income for the year totaled \$1,578,876, while expenses totaled \$1,583,056.



Tina and Freddie Haltiwanger  
Lillian Hardin  
Paul Harless  
Ann Hart  
Sandra Hartley  
Myra and Robert Havird  
Kimberly Hawkins  
Barbara and Bill Haynes  
Mr. and Mrs. Russell Hays  
Ann and Charlie Hecht  
Elizabeth Todd Heckel  
Darla and Don Helms  
Charlotte Henderson  
Mr. and Mrs. Sam Hendley, Jr.  
Summer Herlocker  
Angela Hicks  
Nancy and Norman Hightower  
Margaret Hill  
Gina and Steven Hinds  
Raquel Hinson  
Peggy Hippen  
Lisa and Eric Hoagberg  
Charles Holden

Ella and Thomas Holden  
Dr. Robert C. Holleman  
Homecare Medical Aids  
Nancy Hoover  
Linda Horton  
Mr. and Mrs. Gene Howe  
Geneva Huggins  
Nicole Hunnicutt  
Marie France Iniguez  
Barbara and Larry Jackson  
Jackie Jackson  
Jamie Jefferies  
Jimmie's Florals & Interiors  
Jill Hinnant Jiunnies  
Cheryl Johnson  
David and Diane Johnson  
Dr. and Mrs. Graeme Johnson  
Jeri Johnson  
Caroline and Joe Jones  
Mary Helen Jones  
John Jones  
Mr. and Mrs. James Jumper  
Kelly and Eric Karow

Stacy and Dusty Kay  
Mary Kendrick  
Dr. Sally King  
Barbara and Lewis Kirby  
Carol Kline  
Jennifer Kline and Brian Lear  
Blanche and Delano Knight  
Bonnie and Jerry Knox  
Mary Knudsen  
Kool Smiles  
Jean Koon  
Wilma Koon  
Sharon Krasner  
James and Pam Kruzan  
Hazel and Larry Kyzer  
Frank LaComba  
Pat LaGrange  
Jean Landfried  
Carla Lane  
Susan Lark  
Richard Larson  
Omega Latham  
Donna and Richard Leatherwood

## In Memory Of ...

Amanda Fields  
By Suzanne and Claude Barden  
Charles "Tiny" Carson  
By Mr. and Mrs. John Dunbar, III  
Charles T. True, Jr.  
By Mr. and Mrs. John Dunbar, III  
Christy Dixon  
By Mr. and Mrs. John Richards  
Dorothy Ritter  
By Lu and Joe Murray  
Dr. and Mrs. J. William Pitts, Sr.  
By Mr. and Mrs. Smyth McCrady  
Dr. Thomas J. Bradley, Jr.  
By Mr. and Mrs. John Dunbar, III  
Elizabeth Vardell Lovelace  
By Mr. and Mrs. John Dunbar, III  
Fred Burger  
By Bevelry Byars  
Gay Fuller  
By Mr. and Mrs. John Dunbar, III

Gloria Davenport  
By Dee Dee and Don Pope  
Harold Gentry  
By Mr. and Mrs. John Dunbar, III  
James Maloney  
By Holly and Andy Pope  
By Libby and David Lanier  
Jim Harris  
By Mr. and Mrs. John Dunbar, III  
Joe Pierce  
By Diane and David Johnson  
Joshua Ruple  
By Wendy and John Ruple  
Joyce and John Davis  
By Bertha and Lloyd Carroll  
Kipp Botts  
By Beth and Al Austin  
Louise Swan Nowell  
By Mr. and Mrs. John Dunbar, III  
Lucy Little Ayers  
By Mr. and Mrs. John Dunbar, III

Macayla Smoak  
By Barbara and Stanley Lowder  
By Teresa and Marvin Painter  
By Brooke Smith  
By Jennifer and Edward Stallworth  
Mary Childs Seabrook Sasnett  
By Mr. and Mrs. John Dunbar, III  
Minnie Stoudenmire  
By Bonnie and Jerry Knox  
Opal Norton  
By Kay and Eddie Martin  
Patrick Henry Riddick  
By Mr. and Mrs. John Dunbar, III  
Scott Fuller  
By Mr. and Mrs. John Dunbar, III  
Whitley Vanhook  
By Mr. and Mrs. Bill Vanhook  
William Hampton, Jr.  
By Mr. and Mrs. John Dunbar, III  
Wynette Waters  
By Winton E. Waters



## Highlights:

Laura Bird Long, MD served as Board President.

Family Connection received 3,183 referrals, and Support Parents were matched to 631 referred parents.

Seventy-nine parents completed Support Parent training.

Project Breathe Easy responded to 770 referrals.

The Family Partner Program provided support for 514 families.

Family Connection sponsored 50 different Parent Connections where 2,736 parents learn from each other, support each other and share information. These included support groups around asthma, ADHD,

Neonatal Intensive Care Units (NICU), Down syndrome and autism, among others.

Awareness: The Key to Friendship presented the program on acceptance and understanding of a person with disabilities in 40 schools throughout the state.

Disability awareness walks, and other events, helped to raise awareness about all disabilities and educate the community about the life and accomplishments of people with disabilities.

Family Connection continued to enhance Parent/Professional relations with the visits to the homes of families with children with special needs for medical students, and through the annual conference.

Income for the year totaled \$1,587,465, while expenses totaled \$1,588,789.

Paulette and Dominick Lecardo  
 Barbara Lee  
 Claudia Lee  
 Keith Lee  
 Margaret and Sanders Lee  
 Scott Lee  
 Mary Lehman  
 Amy and Michael Leonhardt  
 Vicki Liggitt  
 Kristen and Charles Lindler  
 Mr. and Mrs. Robert Lindler  
 Robert K. Lindler  
 Joan Lioi  
 Dr. George A. Lippard, Jr.  
 Debbie and Jim Little  
 Carolyn and Maurice Lopez  
 Barbara and Stanley Lowder  
 Lucky BBQ & Catering  
 Rhonda and Jack Mabry  
 Sheila Mack  
 Mary and George Manley  
 Mr. and Mrs. R. Douglass Markham  
 Debra Marshall  
 The Martin Family  
 Kay and Eddie Martin  
 Mr. and Mrs. Harry Craig Mason  
 Chris Matlock  
 Kathleen and Steve Maxwell  
 Mr. and Mrs. Larry McClain  
 Mr. and Mrs. Smyth McCrady  
 Margaret McElveen  
 Mr. and Mrs. Dennis McEntire  
 Angela and Nathan McGaha  
 Martha McGough  
 Dianne and Larry McLees  
 Mrs. Lester McQuain and Janice Nisbet  
 Joann Melancon  
 Dr. and Mrs. Gary Melton  
 Cheryl Metz  
 Laura and Steven Meyer  
 LaVerne Miley  
 Dr. and Mrs. Kevin Miller  
 Ronda and Randy Miller  
 Trudy and Pete Miller  
 Lois Park Mole  
 Beverly Moody  
 Raye Moody

Moore Automotive Service, Inc.  
 Carolyn and Douglas Moore  
 Allison Morrison  
 Matthew Morrison  
 Randi and Gabriel Morrison  
 Traci and Christopher Moser  
 Crystal Mullinax  
 Lu and Joe Murray  
 Bonnie and Bill Neely  
 Carolyn Neely  
 Newton's General Store & Restaurant  
 David Nivens  
 Diane Nix  
 Linda Nodine  
 Theresa Nodine  
 Jennifer Novoa  
 Alison and Thomas O'Banion  
 Donna Oswald  
 Penny and Ron Ott  
 Mr. and Mrs. Franklyn Owen, III  
 Mr. and Mrs. C. R. Owens  
 Mary Owens  
 Mr. and Mrs. Roger Owens  
 Sandra and Harold Padgett  
 Teresa and Marvin Painter  
 Margaret and Ed Parker  
 Lois and Herbert Parrish  
 Kristy and Justen Peace  
 Peach Orchard Firestone, Inc.  
 Sandra and Thomas Pearce  
 Stephania Penley  
 Darlene and Hugh Penny  
 Kim and Lowell Person  
 Susie and Kevin Phillips  
 Pickin' Porkers  
 Pierce Machinery & Wire, Inc.  
 Cheryl Poole  
 Emyrna Poole  
 Dee Dee and Don Pope  
 Susan and Kenneth Potter  
 Kevin Price  
 Mr. and Mrs. William F. Prioleau, Jr.  
 Lorena and Jesse Prioleau  
 Carmen and William Purkerson  
 Quality Printing and Graphics, Inc.  
 Shari Ann and Stephen Quirk  
 Kathy Boyd Randall

Crystal Raney  
 Judy and Rick Rauppius  
 Louise R. Ravenel  
 Kim Reagin  
 Tonya and Reginald Rearden  
 Debra Reaves  
 Ann and Gene Redd  
 Taina and John Redfern  
 Sarah and Alex Reese  
 Hollye and Jim Reid  
 Stacey Rentz  
 Reynolds Drug Store, Inc.  
 Judith and Steven Rhodes  
 Amy Ricard  
 Nancy and Wayne Ricard  
 Mary Ellen and James Ricard  
 Tammy and Gary Ricard  
 Dargan Richards  
 Mr. and Mrs. John Richards  
 Diane Richter and Lance Lowman  
 Kristina Rife  
 Lynn Ritter  
 Mr. and Mrs. Joe Roddey  
 Cheryl Roseberry  
 Rosemary Amusements of Andrews  
 George Rosser  
 Jeannie and Hyman Rubin, Jr.  
 Michelle and Benjamin Ruf  
 Roxanne and Bob Russell  
 Gail and David Sanders  
 Gayle Sanders  
 SC Military History Foundation  
 Seaboard Restaurant  
 Molly Sears  
 Sandra Selman  
 Peggy and David Settlemyre  
 Sexton's Automotive  
 Mr. and Mrs. Jack Shaw  
 Wilda Shaw  
 Kelly Sherwood  
 Dr. and Mrs. Larry Siegel  
 Donna and Trey Simon  
 Mary Simon  
 Pat Simon  
 Martha Sims  
 Mary and Scott Singer  
 Jamie L. Sizemore

## 2009 • 'Twenty Years'

### Highlights:

Laura Bird Long, MD served as Board President.

Family Connection received 2,908 referrals, and Support Parents were matched to over 543 referred parents.

Eighty-nine parents completed Support Parent training. A total of more than 1,000 parents have now completed training.

Project Breathe Easy responded to 774 referrals.

The Family Partner Program supported 531 families throughout the state.

Family Connection sponsored over 50 Parent Connections where 2,403 parents could learn from each other, support each other and share information.

A new email newsletter called eConnection was created to increase the sharing of infor-

mation with parents.

Family Connection restructured offices into Regions for the Upstate, Midlands, and Lowcountry to better utilize resources. Anderson, Greenville, Spartanburg and Rock Hill were combined to create the Upstate office. Charleston was renamed the Lowcountry area office. The Aiken office was closed and the remainder of the state is the Midlands.

The state-wide network of staff and volunteers hosted family social activities, disability awareness events and other programs to support parents and children.

Andy Pope resigned as Executive Director. Jackie Richards was appointed Interim Executive Director.

Income for the year totaled \$1,411,563, while expenses totaled \$1,519,500.



Sue and John Slater  
 Mr. and Mrs. J. G. Slaughter, Jr.  
 Marie and Wade Small  
 Brooke Smith  
 Mr. and Mrs. Charles Smith  
 Danielle Smith  
 Harriett Smith  
 Krishna and Alan Smith  
 Linda Smith  
 Sarah Smith  
 Mr. and Mrs. Wayne Smith & Susan Craig Design  
 Kathleen and Herbert Sons  
 Ali and Jimmy Sproue  
 Mrs. Mary Stack  
 Jennifer and Edward Stallworth  
 Steadman Law Firm, P.A.  
 Hal Stone  
 Amanda Strite  
 Dianne and Tom Strite  
 Nicole and Erik Stutz  
 Patricia and Todd Swygert  
 Carolyn and Charles Taylor  
 Margaret Ann and Wesley Taylor  
 Dr. and Mrs. William G. Taylor  
 Joyce and Jeff Thacker  
 Think Advertising and Marketing, LLC  
 Colleen Thomas  
 Sherree Thrasher  
 Three T Services, LLC  
 Emily and Kevin Tinch  
 Lynda and George Tingley  
 Lynn and Michael Tinsley  
 Glynda and Robert Todd  
 Susan Tollison  
 Sandi Tolly  
 Dr. R. Sims Tompkins  
 Top-Flight Concessions  
 Janelle and Kenneth Tuckmantel  
 Saritta and Derrick Van  
 Elizabeth M. Vandever  
 Tammy and Louis Visnyai  
 Wachovia Foundation Matching Gifts Program  
 Madge Waldrep  
 Winton E. Waters  
 Jennifer Weaver  
 Allison and Stephen Webber  
 Kathryn Whitaker

Perrin White  
 Sydney and Joseph White  
 Tammy Whittle  
 Sarah Wildes  
 Deena and Greg Wiles  
 Anita Williams  
 Brenda and Allan Williams  
 Cynthia and Joseph Williams  
 Williamsburg Feed & Tack, Inc.  
 Mrs. Fran Wood  
 Kristin Woodall  
 Jean and Ernest Wooten  
 Phyllis and Craig Wooten  
 Jessica Wyndham

### Gifts In Kind

Ace Hardware  
 Anderson University  
 Karen Anzola  
 Applebee's Neighborhood Restaurant  
 AT&T Pioneers  
 Darlene Bazemore  
 BB&T  
 Belk  
 BiLo  
 J. Scott Blackmon, Jr.  
 Blue Ridge Bank  
 Bohemian  
 Bouncerific  
 Branham Florist Supply Company  
 Stephanie Bridgers  
 Bright Start  
 Becky and Rick Brown  
 Dustin Brown  
 Buffets, Inc.  
 Capstone Community Church  
 Carvel Ice Cream  
 Charanda's  
 CiCi's Pizza  
 Clowns for Christ  
 Monica Coleman  
 Colonial Life Arena  
 Conder Elementary Steel Band  
 Country Spirit  
 Creekside B-B-Q  
 CVS Pharmacy  
 Roxanna Derrick

DSN & EI Service Coordinators  
 Ellison's Cake and More  
 Embassy Suites  
 Emmanuel Lutheran Church  
 Fatz Cafe  
 Patricia Fernald  
 Firehouse Subs  
 First Christian Church  
 Fox Tree Farms  
 Foxy Ladies Beauty  
 Jill Fuller  
 Gaile's Happy Clowns  
 Carrie Garrett  
 Gibson Jewelers  
 Sandy Hanebrink  
 Beverly Harper  
 Catherine and WC Hoecke  
 Home Care Medical Aids, Inc.  
 The Home Depot  
 John Hook  
 Drs. Kyllan and Christopher Hutchinson  
 HWEC Culinary Arts Dept.  
 Image Movers/Hoover Brother Productions, LLC  
 Ingles  
 Debby Jernigan  
 Michelle and Jeff Johnson  
 Jumping Jax  
 Jumping Jukebox  
 Junior League of Columbia  
 Keeler Landscape and Design Company  
 Kohl's  
 Kool Smiles  
 Kroger  
 Lynette Landers  
 Lexus of Columbia  
 Little Caesar's  
 Dr. and Mrs. Michael Littlejohn  
 Midlands Legal Center  
 Midlands Printing  
 Jerri and George Mitchell  
 Monkey Joe's  
 Lori and Jason Mosley  
 Ms. Cocky  
 O'Charley's  
 Open Door Baptist Church  
 Mr. and Mrs. Thomas Pate  
 Pediatric Therapy Works



### Highlights:

Heyward Brabham served as Board President.  
 Family Connection received 2,749 referrals, and Support Parents were matched to over 433 referred parents.  
 Thirty-eight parents completed Support Parent training.  
 Project Breathe Easy responded to 1,003 referrals. Emergency room visits were reduced by 86%.  
 The Family Partner Program provided support for 415 families by 36 Family Partners throughout the state.  
 Family Connection sponsored over 50 Parent Connections where 1,727 parents could learn from each other, support each other and share information.  
 Awareness: The Key to Friendship, reached more than 587 teachers, 2,801 students, and

166 Teacher Cadet students in 39 schools.  
 An Hispanic Outreach was initiated in 2010 to reach the various populations of Hispanic people throughout the state.  
 Family Connection continues to make effective use of electronic communication. The web page at [www.FamilyConnectionSC.org](http://www.FamilyConnectionSC.org) received 133,600 visits during the year. 5,660 people received eConnection. This email newsletter can be targeted to different regions or individual counties to provide information relevant to everyone. Furthermore, now Family Connection has its own Facebook page.  
 Jackie Richards, a long time friend of Family Connection, was appointed Executive Director.  
 Income for the year totaled \$1,359,058, while expenses totaled \$1,278,827.

Susie Phillips  
 Piggasso's  
 Dr. and Mrs. Mark Posey  
 PSA Healthcare  
 Publix Super Markets, Inc.  
 Mark Quattlebaum  
 Quizno's  
 Crystal Ray  
 Denise Rhodes  
 Brenda and Pete Richards  
 Richland County Parks and Recreation

Royal Z Bowling  
 Sammeth Drugs  
 Select Health of SC, Inc.  
 Mr. and Mrs. Keith Shaw  
 The Sherwin-Williams Company  
 Darlinda Shirley  
 Simon Anderson Mall  
 Jeff Smoak  
 Special Olympics  
 State Credit Union  
 Sysco Food

John Tudor  
 USC School of Medicine  
 Wal-Mart  
 Jewelry Warehouse  
 Wendell's Country Store  
 Wild Wing Cafe  
 Anita Williams  
 Mr. Greg Wilson  
 WIS-TV  
 Ye Olde Sandwich Shoppe  
 Za's Brick Oven Pizza

## In Honor Of ...

Hannah Grace Anderson  
 By Suzanne and Claude Barden  
 Bert Austin  
 By Barbara and Johnny Dover  
 Robert Bass, Jr.  
 By Ali and Jimmy Sprouse  
 Eleanor Blizzard  
 By Mr. and Mrs. John Dunbar, III  
 Dr. and Mrs. A. McKay Brabham, III  
 By Mr. and Mrs. Perrin Desportes  
 Annette Bramsen  
 By Mr. James E. Bramsen  
 Katie Brown  
 By Dr. Mark Locke  
 Katie and Jim Burgess  
 By Mary Alice and Randy Akers  
 Katie, Jim, and Bryann Burgess  
 By Bonnie and Bill Neely  
 Drew Curry  
 By Samantha and Lance Coker  
 Dan Dennis  
 By Dennis Corporation Employees  
 Laine Dunbar  
 By Mr. and Mrs. Dennis McEntire  
 Jane Dunbar  
 By Donna Fuller  
 Family Connection Staff  
 By Mr. and Mrs. Randolph Liggitt  
 Patrick Fernald  
 By Bertha and Lloyd Carroll

Donna Fuller  
 By Mr. and Mrs. John Dunbar, III  
 Denby Gorman  
 By Mr. and Mrs. John Dunbar, III  
 Jason Haney  
 By Liz and Armin Brecher  
 Susan Hendley  
 By Mr. and Mrs. Sam Hendley, Jr.  
 The Hoecke Family  
 By Mr. and Mrs. R. Paul Chlan, Jr.  
 Karl Hoecke  
 By Mr. and Mrs. Philip Bramsen  
 Elliott Holman  
 By Dr. Marshall Meadors, III  
 Austin Houser  
 By Kathy and Ashley Houser  
 Megan Landers  
 By Sylvia and Mike Landers  
 Kate Liggitt  
 By Claudia Maloney  
 By Celia and Charles O'Neal  
 Julie Nye  
 By Mr. and Mrs. John Dunbar, III  
 Robin O'Neil  
 By Hampton and Carter Morris  
 Sandara Phaup  
 By Mr. and Mrs. John Dunbar, III  
 Matthew Phillips  
 By Susie and Kevin Phillips  
 Susan Pinckney  
 By Taina and John Redfern  
 Andy Pope  
 By Kay Todd Pope

Whitney Reid  
 By Barbara and Brian Leary  
 By Mrs. Lester McQuaig and Janice Nisbet  
 By Blair Shwedo  
 By Winton E. Waters  
 Jackie Richards  
 By Brenda and Pete Richards  
 Elyse Ritter  
 By Sandra and Marvin Free  
 By Connie and Leon Ginsberg  
 By Judge and Mrs. Sol Gothard  
 By Allison and Jonathan Gottsegen and Family  
 By Mr. and Mrs. R. Kahn  
 By Sharon Krasner  
 By Sherry Larson  
 By Joann Melancon  
 By Margie and Owen Ritter  
 By Betsy and Robert Ritter  
 By Pennie and Dave Roberts  
 By Dr. and Mrs. Larry Siegel  
 George Sands  
 By Dr. Marshall Meadors, III  
 The Taylor Family  
 By Mr. and Mrs. John Dunbar, III  
 Muriel Taylor  
 By Mrs. Bertie H. Bunch  
 Zachary Turner  
 By Lillian Hardin  
 Ann and Eddie Waddell  
 By Mr. and Mrs. Gene Batson and family  
 Steve Zeigler  
 By Lee Shcolnik and Susan Marciano



*"When I returned home after meeting with other Family Connection parents, I felt like a ton of bricks had been lifted off of me. I actually saw other people who had problems like me. Thanks a billion." - from 1991 Annual Report.*



